

# Plant Plots

## Vermillion

Brilliant for bees

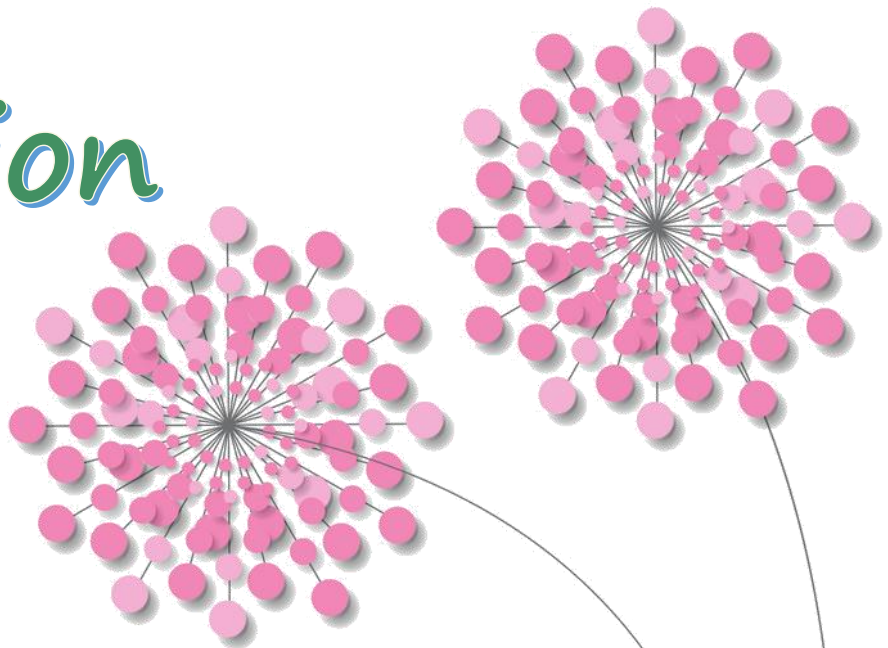
Scented flowers

Bright happy  
planting scheme

Low maintenance

Winter colour

Not for cold exposed  
gardens





*Acer*



*Berberis*



*Cornus*



*Eleagnus*



*Euonymus*



*Geum*



*Imperata*



*Iris*



*Lavender*



*Olive*



*Sedum*



*Skimmia*



*Syringa*



*Thuja*



*Verbena*



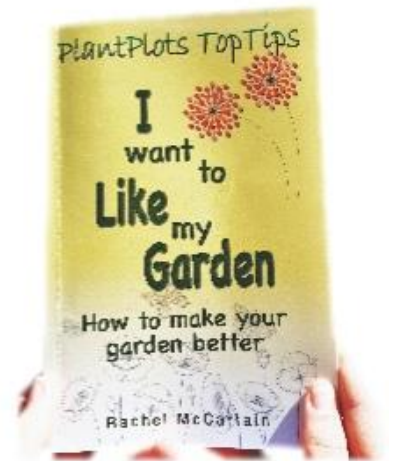
Acer Palmatum 'Kamagata'		<p>All Acers need protection from the wind and strong sunshine. They have fine delicate leaves which shrivel and go brown in a strong wind, so a little shelter is required.</p>	<p>For the first year at least, make sure the tree does not dry out. Once it is established, you can simply sit back and enjoy the foliage colour as nothing else is really required.</p>
Berberis Atropurpurea 'nana'		<p>This is a lovely purple coloured bush that won't get too big. It does have thorns so best not planted by a path!</p>	<p>Simply prune to the desired shape and size in mid spring</p>
Cornus Sibirica		<p>This is red dogwood, a rather innocuous plant whilst in leaf, but give it some summer sunshine and in winter – it does its thing! If you want more, simply in spring the cut branches can be pushed into the ground and will re-root if watered.</p>	<p>These are fab for Christmas – lots of lovely bright red sticks. You need to be mean with Cornus. Every spring, just as the leaves start to grow, cut it right back to the base – then it will send up lots of lovely new branches ready to turn red.</p>
Eleagnus		<p>Allow this to grow vertically to the height you want</p>	<p>Only trim the shrub to keep it to the size and shape you want</p>
Euonymus Fortunei 'Silver Queen'		<p>This is a pop it in and forget about its shrub. It is evergreen and a requires little or no maintenance other than a quick trim in spring and autumn to keep it the shape and size you want. This plant will tolerate more shade but won't then have quite as strongly coloured leaves.</p>	<p>You can buy a smaller plant and be patient or buy a larger one to fill the space more quickly. If you choose the larger plant, then you will need to water well for the first season until it establishes itself.</p>
Geum 'Mrs Bradshaw'		<p>Geums are classified as 'happy flowers'. The plants grow anywhere with a bit of sun and then send up lots of lovely red pom-poms of flowers on stalks. En-masse, they are stunning.</p>	<p>Simply cut off the flowers stalks when they are finished and remove and scraggy leaves. I have suggested 3, but you can shoe-horn these in anywhere, so more is better.</p>

Imperata Rubra		Known as blood grass, this plant defies the myth that grass must be green! In sunny spots it will go bright red. The plant will gradually spread around the border, but this is a good thing!	In really cold damp winters, it may struggle. If you are worried about losing it, dig up some, and pop it in a pot in a cool light frost-free place and it should be fine, otherwise, leave it be.
Iris Pallida		There are several varieties of Iris to choose from, but the deepest purple is Dracula's Kiss, Superstition or Black Swan.	Plant the Iris with the fleshy roots sitting just on the surface of the soil. Every 3-4 years you may need to lift and separate if the Iris stop flowering as well. Then replant. If Iris his not sitting in puddles in winter it will thrive – so maybe add some grit under the rhizomes when planting.
Lavender Hidcote		Lavenders love sun and hate soggy bottoms. If the soil stays really wet in winter, throw some stone in the base of the planting hole to help drainage.	Trim the spent flowers. Trim the lavender to the shape you want, but only trim the soft grey foliage.
Olive Europa		Olives are evergreen trees that lose some of their leaves in summer. Water it well for the first year	Cut off straggly branches if necessary, and pull off any stems that appear lower down the trunk otherwise leave it to grow
Sarcococca Confusa		Every garden must have a Sarcococca. Just 1 sprig will scent your house in winter. It's very well behaved and almost indestructible.	Simply trim to size in after it has flowered in early Spring.
Sedum 'Red Cauli'		Sedums are a bit like marmite, people love them or hate them. However, they stay gloriously red all year, have flowers on them that butterflies, moths and bees adore and will tolerate drought and neglect.	Trim off spent flowers and remove and scraggy worn out stems.
Thuja 'Aurea nana'		This is a small round green conifer, if you don't like them replace with Buxus (box balls instead)	Water well for the first year after replanting



# Have you read our amazing book?

This could be  
the best garden book  
you'll ever buy



eBook and Paperback available to purchase via Amazon and other online retailers.

Published by: The Choir Press ISBN: 978-1-78963-113-5

## You can even listen to us too:

The Plotting Shed Podcast  
for lots of design advice you  
might never have even  
thought of!

The Plotting Shed  
Podcast



PlantPlots 2021. Copyright reserved, reproduction of this design in whole or part is strictly prohibited. All information is correct at time of publication. The photographic images of the finished plots are an artistic impression of how the border may look. Plants flower at different times dependent on position, climate and growing conditions, but the images we show will give you an impression of how the design will look after a couple of years. Obviously, the final outcome will also depend on how well the border has been tended to. PlantPlots does not endorse any product or recommend any suppliers. Thank you for your cooperation.

PlantPlots, 1 East Avenue, Middleton on Sea W Sussex PO22 6EG

[design@plantplots.com](mailto:design@plantplots.com) 07985 917767 / 01243 586635