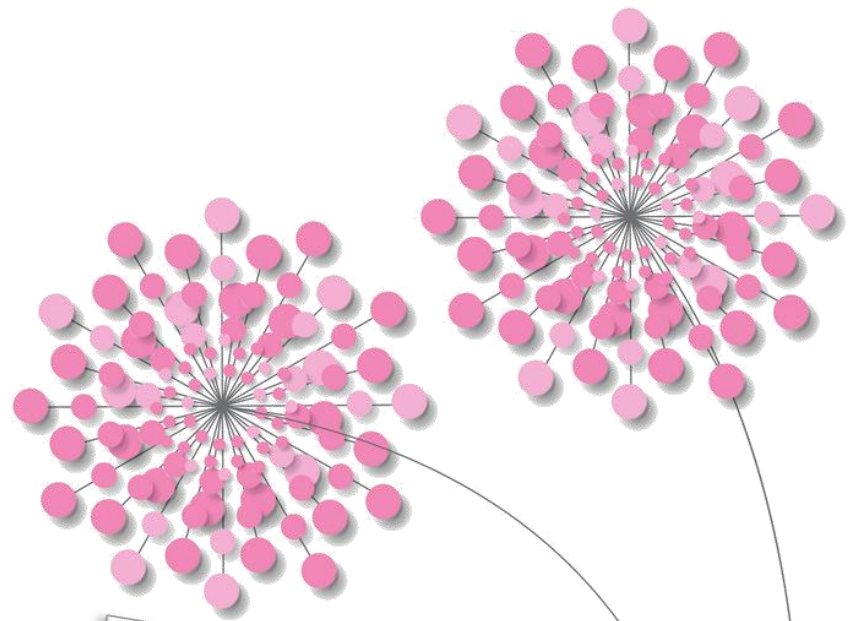


Plant Plots

Seville

2 gorgeous styles for
a small but sunny
garden
or a fabulous pot
display

Great for Bees,
butterflies,
dancing grasses
easy care plants



design@plantplots.com



Allium A



Allium H



Catananche



Cosmos



Dierama



Elymus



Gladioli



Liriope



Pennisetum



Schizostylis



Thalictrum



Thyme



Canna



Crocus



Phyllostachys



Tulip Ballerina



Verbena



Freesia



Miscanthus



Gladioli



Libertia

Allium 'Atropurpureum'		These are gorgeous deep purple pompoms. Plant these bulbs 10 cm deep, don't forget where you planted them and dig them up by accident. Then sit back and wait for summer!	The only thing you really need to do, is dry the seed heads and spray them silver or gold for Xmas decorations!
Allium 'Hollandicum'		Think tall stately purple pom-poms. Plant these bulbs 10 cm deep, then sit back and wait for April!	As above.
Catananche Caerulea		Known as cupids dart, this is a papery flower in blue or white, very pretty and dead easy to grow	This plant needs an open sunny and most importantly well drained poor soil. Then it will be happy and you won't need to look after it!
Cosmos bipinnatus 'Purity'		Cosmos produce clouds of starry flowers nearly 5 ft tall with soft tactile foliage. These are an annual but are so easy, simply sow and grow.	Nothing needed just cut down tatty spent foliage and save the seed for next year.
Dierama Pulcherricum		This has long thin strappy leaves, in the early summer it sends up lots of 'fishing rods' with pink to purple bell-shaped flowers hanging down. It's very pretty but may take a couple of years to really start performing.	Simply cut out any brown leaves and remove spent flower stalk when you have had enough. This plant needs little or no feeding, in fact if you add too much fertiliser it will send up lots of leaves and not enough flowers.
Elymus Magellanicus		If you thought grass was meant to be green, think again. This one is electric blue!	It doesn't do much as a plant apart from grow really blue. Plant in a super sunny spot, & don't feed it. Other than that, just tidy it up if it's having a bad hair day.
Gladioli Callianthus		Add these bulbs to the side border, and to all your pots. These are not your 'Dame Edna' type gladioli, these are far better, and they	As with any bulb, plant it at the right depth, then forget, as these are late summer flowering, you need to plant them in the spring.

		flower in late summer/early autumn.	These Gladioli also smell lovely too.
Liriope Muscari		This is a low growing grassy like plant with spires of blue flowers. It is slow to grow, but patience will be rewarded!	Liriope grow pretty much anywhere, they just hate soggy bottoms, so if the ground tends to be wet in winter, improve the drainage with grit before planting.
Pennisetum Hameln		A soft touchy-feely fluffy grass which looks beautiful in frost. You can buy 1 big one and split it into more plants very easily.	Don't do anything till the spring, then simply 'comb' the grass through with a hand fork and remove the spent flower spikes.
Schizostylis Coccinea		Aka the Kaffir Lily. Think sword like foliage topped with star shaped pink flowers in November.	Plant as a bulb, in a sunny well drained place and wait for when everything else has given up at the end of Summer – and these bulbs pop up and do their thing!
Thalictrum Delavayi 'Hewitts Double'		This is a tall (may need staking) light and airy plant. It has beautifully delicate foliage and the flowers are best described as purple candy floss held 5 feet in the air	It may need little support to stay absolutely vertical, other than that, plant it, water it to start with, enjoy it and cut down spent foliage in the winter as it dies back down.
Thyme 'Doone Valley' or 'Vulgaris'		Any plant that smells, looks and tastes good has to be included in your garden! Oh and this is beloved by bees too.	Plant in a hot well drained sunny spot only trim it back after flowering to keep it 's compact shape.

Planting Instructions:

It is always best to first weed thoroughly and remove as many weed roots as possible. Always dig a hole slightly bigger than the pot and then place the plant in the hole. Press firmly in and then water thoroughly. If the site is in full sun, fill the unplanted hole with water and plant after this has drained away.

Do remember to water well for the first season. Water the soil around the plant and count to at least 10 before moving on to the next plant. If planting bulbs, don't cheat, if it says 10cm deep, then it needs to be 10 cm deep.

Happy gardening!

Phyllostachys Aurea		This is a tall yellow stemmed bamboo. To see it at its best, keep it well fed and don't allow it to dry out. Bamboo leaves shred in wind, so this is best in a more sheltered site, but at its best it is beautiful, especially with the sun shining through the leaves!	Every year cut out weak or bent stems. Aim for an uncluttered collection of stems. Strip the lower leaves off the canes to see the colour of the stems. This will need regular watering & feeding in its pot to keep look lush and gorgeous.
Canna Tropicanna		Think elephant sized leaves in a stripy orangey purple colour topped with bright orange flowers.	This plant requires plenty of food and moisture to look amazing. Plant it in a really rich soil and feed regularly. It will die down in winter, in sheltered climates it does survive outside, but you can cover it in fleece if it becomes really cold. Only remove the dead foliage in spring, as it helps protect the plant during winter.
Libertia Peregrinans		This is a plant with orange and green stripy leaves – and it is very easy to look after as long as it does not get waterlogged.	You don't need to do anything to it once planted apart from enjoy looking at it!
Herbs		Add any herbs to the pots you wish. Mint, Rosemary, Oregano, Basil, Thyme, Sage, Marjoram, Lemon Verbena	If you plant Mint, plant it in a pot all by itself – it spreads faster than a viral tweet! The same for Lemon Verbena or Lemon Balm. Otherwise keep cutting and trimming and eating what you grow!
Verbena Bonariensis		This is a garden must have. A plant that is beloved by butterflies, requires only 1 chop a year and looks stunning in the sunshine	Plant it, enjoy it, cut it down in winter, wait for next year!

Tulips mix orange, yellow & a few purple		Plant these under the herbs in the planters at least 10 cm deep, so they pop up in April before your herbs get going.	Plant tulip bulbs in the Autumn, pointy end upward. Once flowered cut the stem down to the first set of leaves and forget about them
Crocus Yellow		These will pop up in early spring and can be planted under the Canna and in the herb planters.	Birds do seem to like eating the yellow crocus occasionally but other than that they are trouble free!
Freesia yellow		Freesia smell lovely, they may not survive a cold winter, but replacements are easily available	Shoehorn the little bulbs into any gaps in Spring and wait for them to pop up in Summer or buy as plants and plant in the gaps.
Miscanthus 'Morning Light'		Every garden needs a plant that dances in the breeze. This Miscanthus tolerates more shade so will brighten up the darker corners.	You can cut this down to the base in Spring before the new growth starts, or you can cut just cutout the older stems, but that's a bit more fiddly.

Try our design service too – it's so easy;
we don't need to visit you.



design@plantplots.com

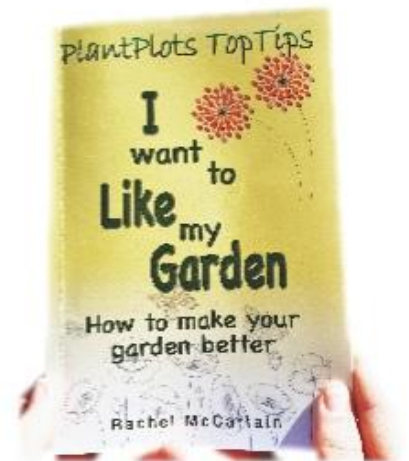
Read our customer
reviews



Read our amazing book

Ebook and paperback available via Amazon and online bookstores

This could be
the best garden book
you'll ever buy



eBook and Paperback available to purchase via Amazon and other online retailers.

Published by: The Choir Press ISBN: 978-1-78963-113-5

You can even listen to us too:

The Plotting Shed Podcast
for lots of design advice you
might never have even
thought of!



PlantPlots 2021. Copyright reserved, reproduction of this design in whole or part is strictly prohibited. All information is correct at time of publication. The photographic images of the finished plots are an artistic impression of how the border may look. Plants flower at different times dependent on position, climate and growing conditions, but the images we show will give you an impression of how the design will look after a couple of years. Obviously, the final outcome will also depend on how well the border has been tended to. PlantPlots does not endorse any product or recommend any suppliers. Thank you for your cooperation.

PlantPlots, 1 East Avenue, Middleton on Sea W Sussex PO22 6EG

design@plantplots.com 07985 917767 / 01243 586635